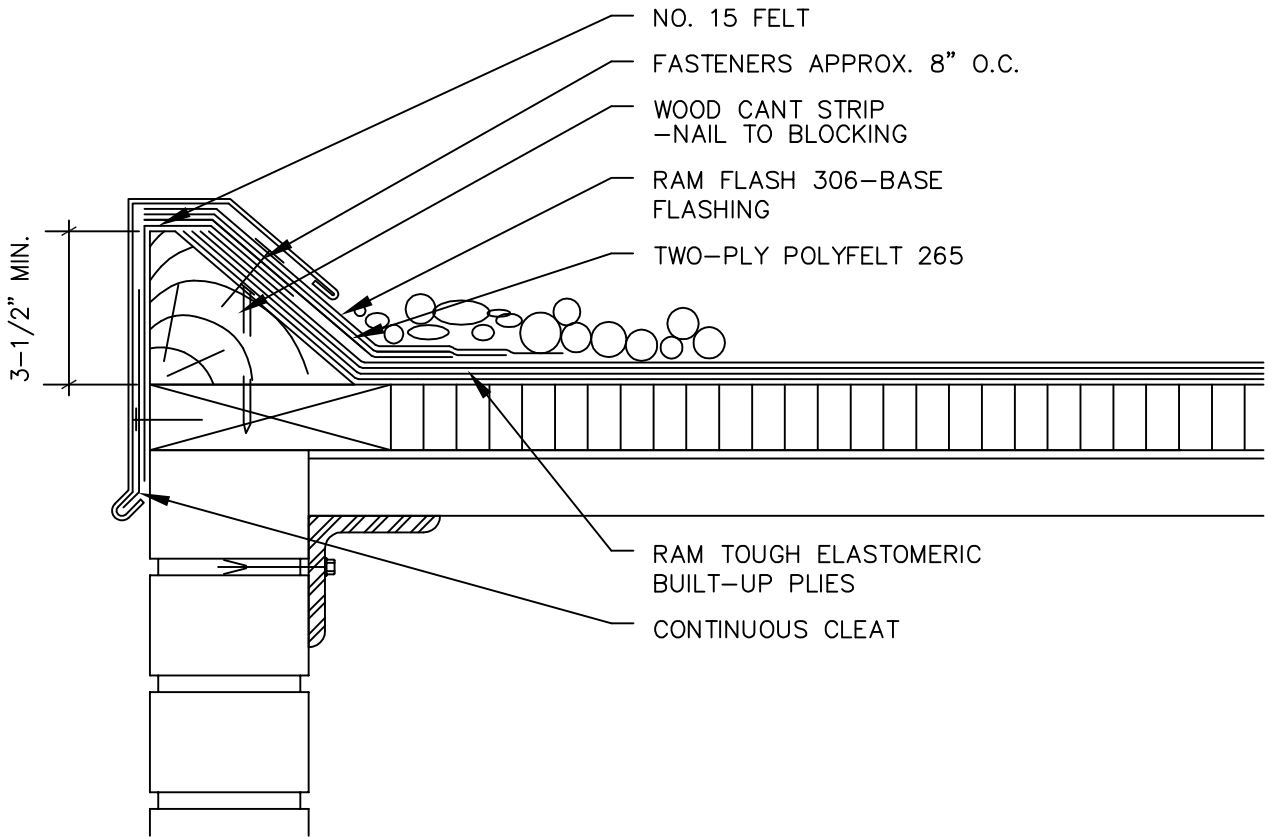


LIGHT-METAL ROOF EDGE



NOTES:

1. THIS DETAIL SHOULD BE USED ONLY WHERE THE DECK IS SUPPORTED BY THE OUTSIDE WALL.
2. THIS DETAIL IS SIMILAR TO DETAILS 'A' AND 'C'. THE CANT STRIP, PLACED AS SHOWN, WILL RESULT IN A HIGHER FASCIA LINE. THE No. 15 FELT SHOWN BEHIND THE FASCIA PROVIDES PROTECTION FOR THE FLASHING EDGE AND SEALS THE SYSTEM UNTIL THE METAL WORK IS COMPLETED.
3. ATTACH NAILER TO MASONRY WALL. REFER TO FACTORY MUTUAL DATA SHEET 1-49.
4. WOOD BLOCKING MAY BE SLOTTED FOR VENTING WHERE REQUIRED.
5. SECURE ROOF EDGE WITH TWO FASTENERS AT CENTER OF EACH SECTION AND AT COVER PLATES -ELASTOMERIC SEALANT AT ALL FASTENERS.



BARRETT COMPANY
BRT-BSEC.DWG
FOR TECHNICAL ASSISTANCE
CALL 1-800-647-0100