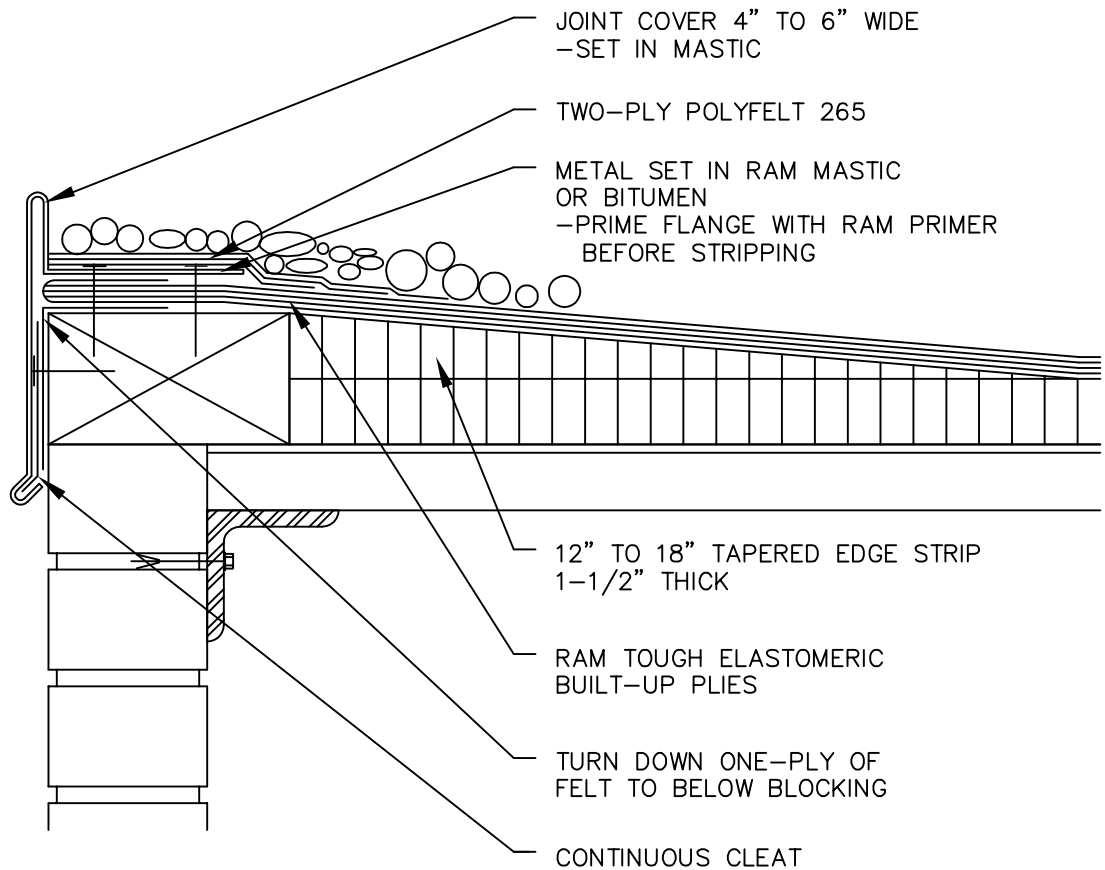


LIGHT-METAL ROOF EDGE



NOTES:

1. ATTACH NAILER TO MASONRY WALL. REFER TO FACTORY MUTUAL DATA SHEET 1-49.
2. THIS DETAIL SHOULD BE USED ONLY WHERE DECK IS SUPPORTED BY THE OUTSIDE WALL.
3. THIS DETAIL SHOULD BE USED WITH LIGHT-GAUGE METALS, SUCH AS 16-OZ. COPPER, .015" STAINLESS STEEL OR 0.040" ALUMINUM. A TAPERED EDGE STRIP IS USED TO RAISE THE GRAVEL STOP. FREQUENT NAILING IS NECESSARY TO CONTROL THERMAL MOVEMENT.
4. WOOD BLOCKING MAY BE SLOTTED FOR VENTING WHERE REQUIRED.
6. REFER TO BUILT-UP ROOFING DETAIL 'Y' FOR METAL THICKNESS AND CLEAT REQUIREMENT.



BARRETT COMPANY
BRT-CSEC.DWG
FOR TECHNICAL ASSISTANCE
CALL 1-800-647-0100