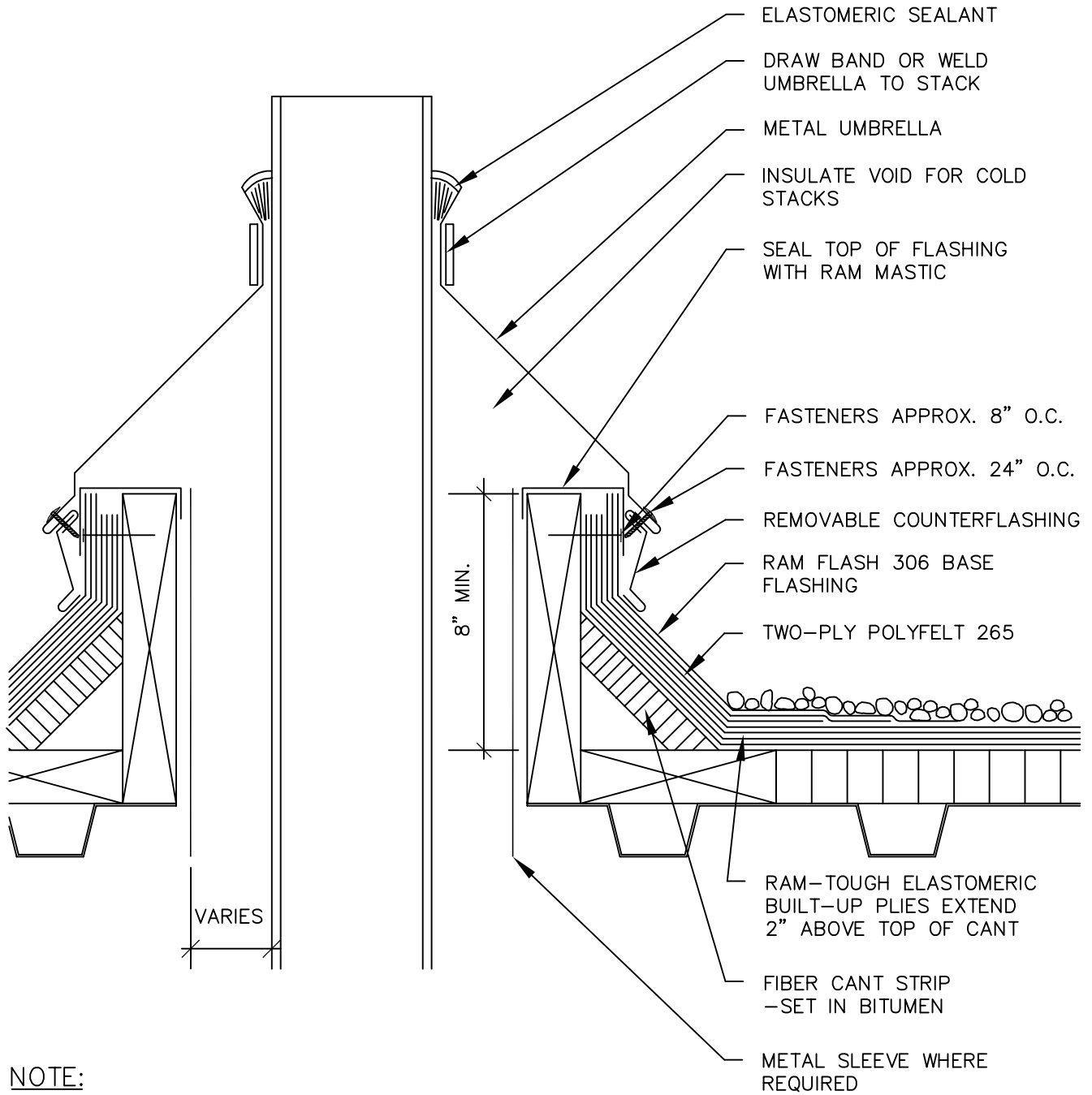


STACK FLASHING



NOTE:

1. THIS DETAIL ALLOWS THE OPENING TO BE COMPLETED BEFORE THE STACK IS PLACED. THE METAL SLEEVE AND THE CLEARANCE NECESSARY WILL DEPEND ON THE TEMPERATURE OF THE MATERIAL HANDLED BY THE STACK.



BARRETT COMPANY
 BRT-JSEC.DWG
 FOR TECHNICAL ASSISTANCE
 CALL 1-800-647-0100