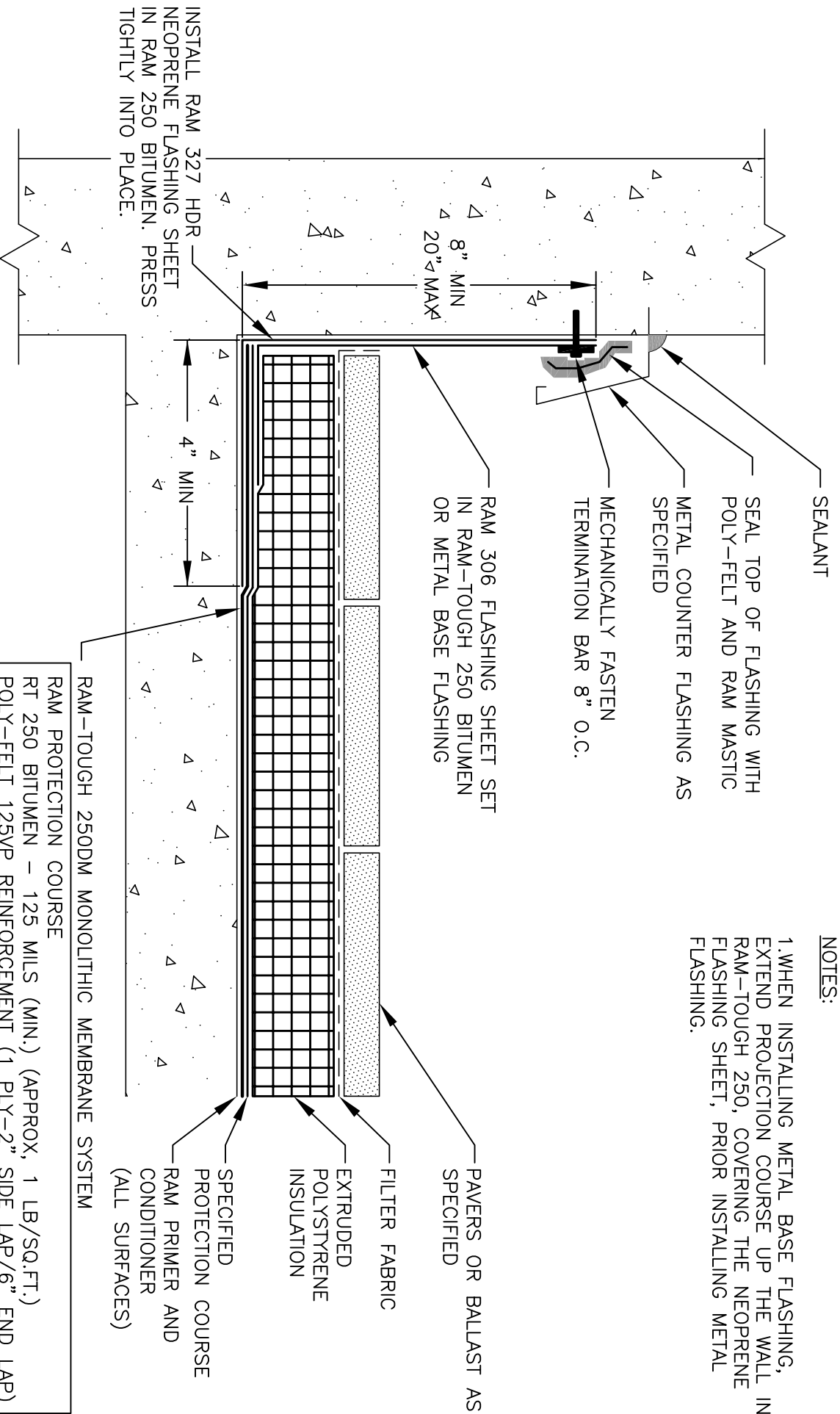


NOTES:
 1. WHEN INSTALLING METAL BASE FLASHING, EXTEND PROTECTION COURSE UP THE WALL IN RAM-TOUGH 250, COVERING THE NEOPRENE FLASHING SHEET, PRIOR INSTALLING METAL FLASHING.



RAM-TOUGH 250DM MONOLITHIC MEMBRANE SYSTEM
 RAM PROTECTION COURSE
 RT 250 BITUMEN - 125 MILS (MIN.) (APPROX. 1 LB./SQ.FT.)
 POLY-FELT 125VP REINFORCEMENT (1 PLY-2" SIDE LAP/6" END LAP)
 RT 250 BITUMEN - 90 MILS (MIN.) (APPROX 0.7LBS./SQ.FT.)

INSTALL RAM 327 HDR NEOPRENE FLASHING SHEET IN RAM 250 BITUMEN. PRESS TIGHTLY INTO PLACE.



Between the World and The Weather Since 1928

RAM-TOUGH 250DM WATERPROOFING SYSTEMS

BASE FLASHING AT MONOLITHIC POURED WALL (DRAWING NOT TO SCALE)

DATE ISSUED: 09/08
 DRAWING NUMBER: RT250-01