

MECHANICALLY FASTEN TERMINATION BAR 6" TO 8" O.C. AND SEAL TOP. STOP TERMINATION BAR AT WALL JOINT

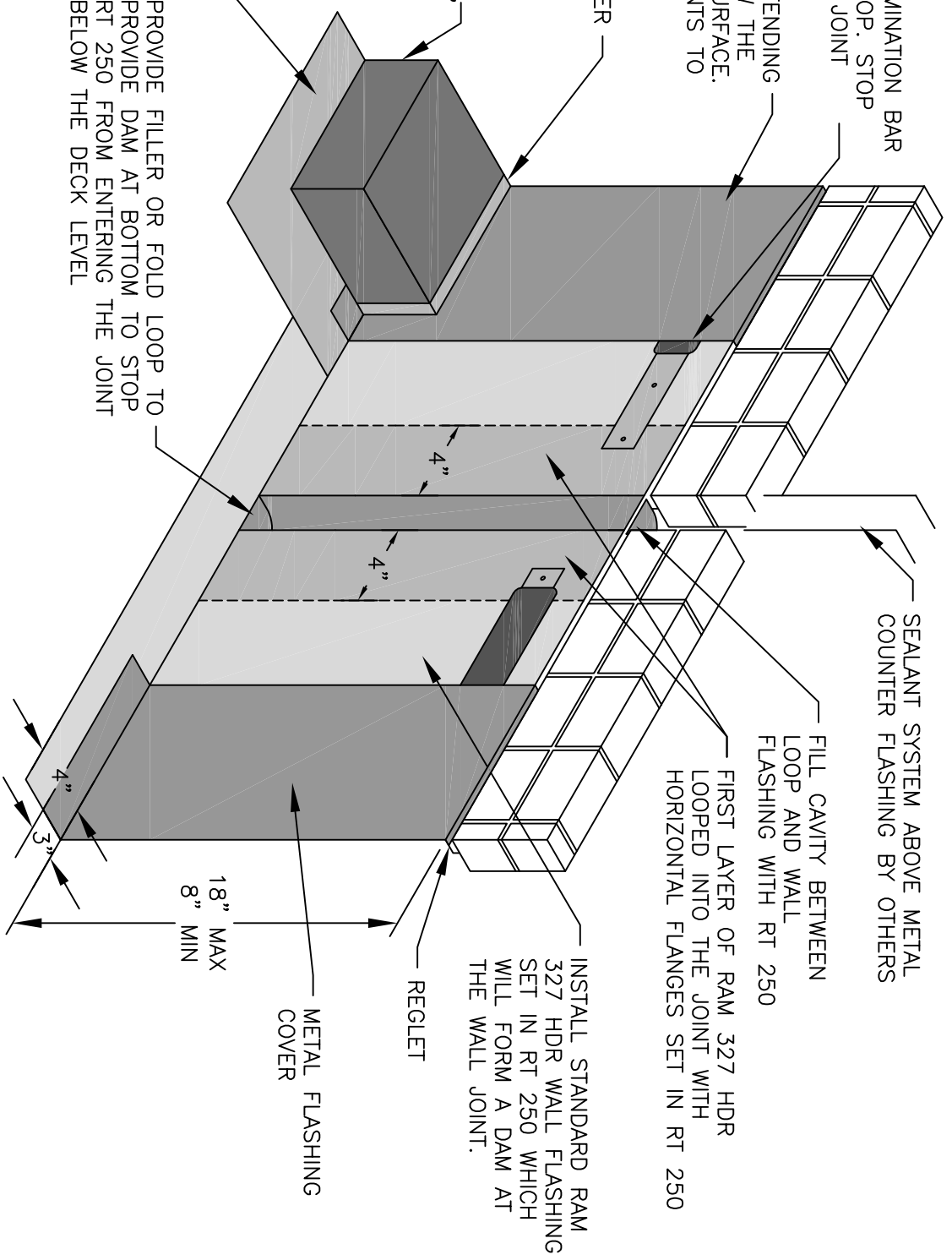
INSTALL METAL FLASHING EXTENDING FROM THE REGLET TO BELOW THE SURFACE OF THE TRAFFIC SURFACE. LAP METAL FLASHING AT JOINTS TO ALLOW FOR FREE MOVEMENT.

EXPANSION JOINT FILLER IS REQUIRED WITH POURED CONCRETE,

OVERBURDEN INSULATION, PAVERS, BALLAST, POURED CONCRETE, ETC.

FIELD OF THE MEMBRANE WITH PROTECTION COURSE

PROVIDE FILLER OR FOLD LOOP TO PROVIDE DAM AT BOTTOM TO STOP RT 250 FROM ENTERING THE JOINT BELOW THE DECK LEVEL



SEALANT SYSTEM ABOVE METAL COUNTER FLASHING BY OTHERS

FILL CAVITY BETWEEN LOOP AND WALL FLASHING WITH RT 250

FIRST LAYER OF RAM 327 HDR LOOPED INTO THE JOINT WITH HORIZONTAL FLANGES SET IN RT 250

INSTALL STANDARD RAM 327 HDR WALL FLASHING SET IN RT 250 WHICH WILL FORM A DAM AT THE WALL JOINT.

METAL FLASHING COVER

18" MAX
8" MIN

REGLET

BARRETT ROOFING AND WATERPROOFING SYSTEMS

EXPANSION JOINT AT MASONRY WALL
(DRAWING NOT TO SCALE)



Between the World and The Weather Since 1928

DATE ISSUED:

8/09

DRAWING NUMBER:

RT250-36