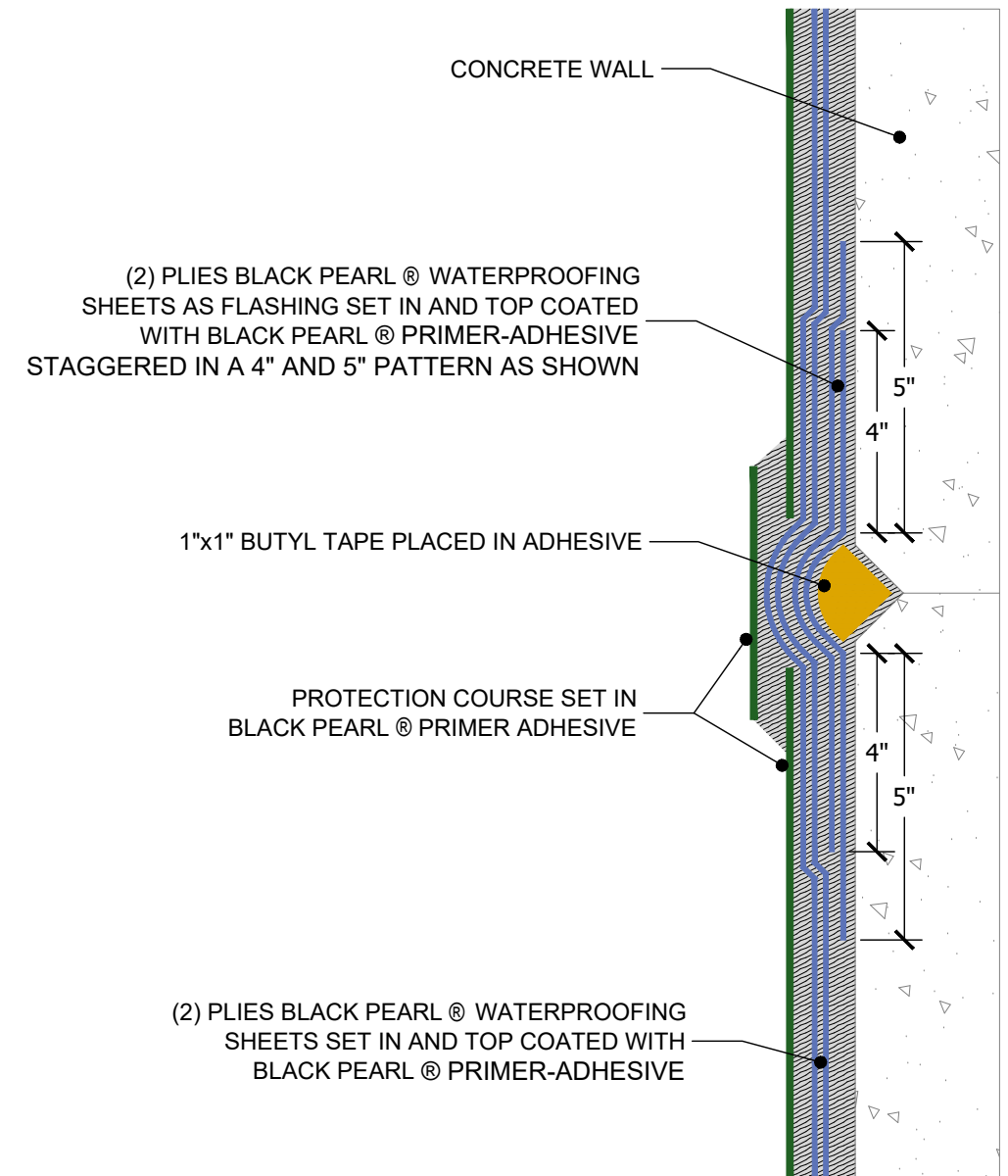


## HORIZONTAL V-TYPE CONTROL JOINT



## VERTICAL V-TYPE CONTROL JOINT

**PREP**

CONCRETE DECKS MUST BE MADE REASONABLE SMOOTH, DRY, FREE OF DIRT, LAITANCE, CURING AGENTS, DEBRIS AND OTHER CONTAMINANTS.

### BLACK PEARL - System Information

**Black Pearl Primer Adhesive**

Apply 15-20 mils of Black Pearl® Primer Adhesive with a non-serrated straight edge squeegee at the rate of 45 sq. ft./gal. Allow it to dry to a tacky condition (approximately 20 minutes) before installing the Black Pearl® Sheet Membrane.

**Black Pearl Primer Adhesive**

**Black Pearl Sheet Membrane**

Rub the sheet into the Black Pearl® Primer Adhesive with a stiff broom, squeegee, hand garden roller, or similar method. Lap all edge seams a minimum of 3 inches. Stagger all end laps a minimum of 6 inches. Coat the top of the first ply with 15-20 mils of Black Pearl® Primer Adhesive at the rate of 45 sq.ft./gal. Allow to dry to tack state.

**Black Pearl Primer Adhesive**

**Black Pearl Sheet Membrane**

Smoothly embed the second ply, offsetting the side laps of the first ply by half a sheet's width. Any "Fishmouths" or wrinkles in the fabric need to be cut out and detailed.

### RT250 - Additional Product Information and Components

**Black Pearl Primer Adhesive**

**Black Pearl Butyle Tape**

**Ram Protection Course (Ram 203,306,306FR)**

**BUTYL OR POLYURETHANE SEALANT**  
Ram Mastic, Keene Seal or Liquid Flash 100

**RamDrain Drainage Mat**



www.BarrettRoofs.com  
☎: 1-800-647-0100

DRAWN BY:	LDS	SYSTEM:	BLACK PEARL
DATE:	12.02.2024	CATAGORY:	CJ
DETAIL NAME:	HORIZONTAL AND VERTICAL V-TYPE CONTROL JOINT	DETAIL #:	BP-CJ-01