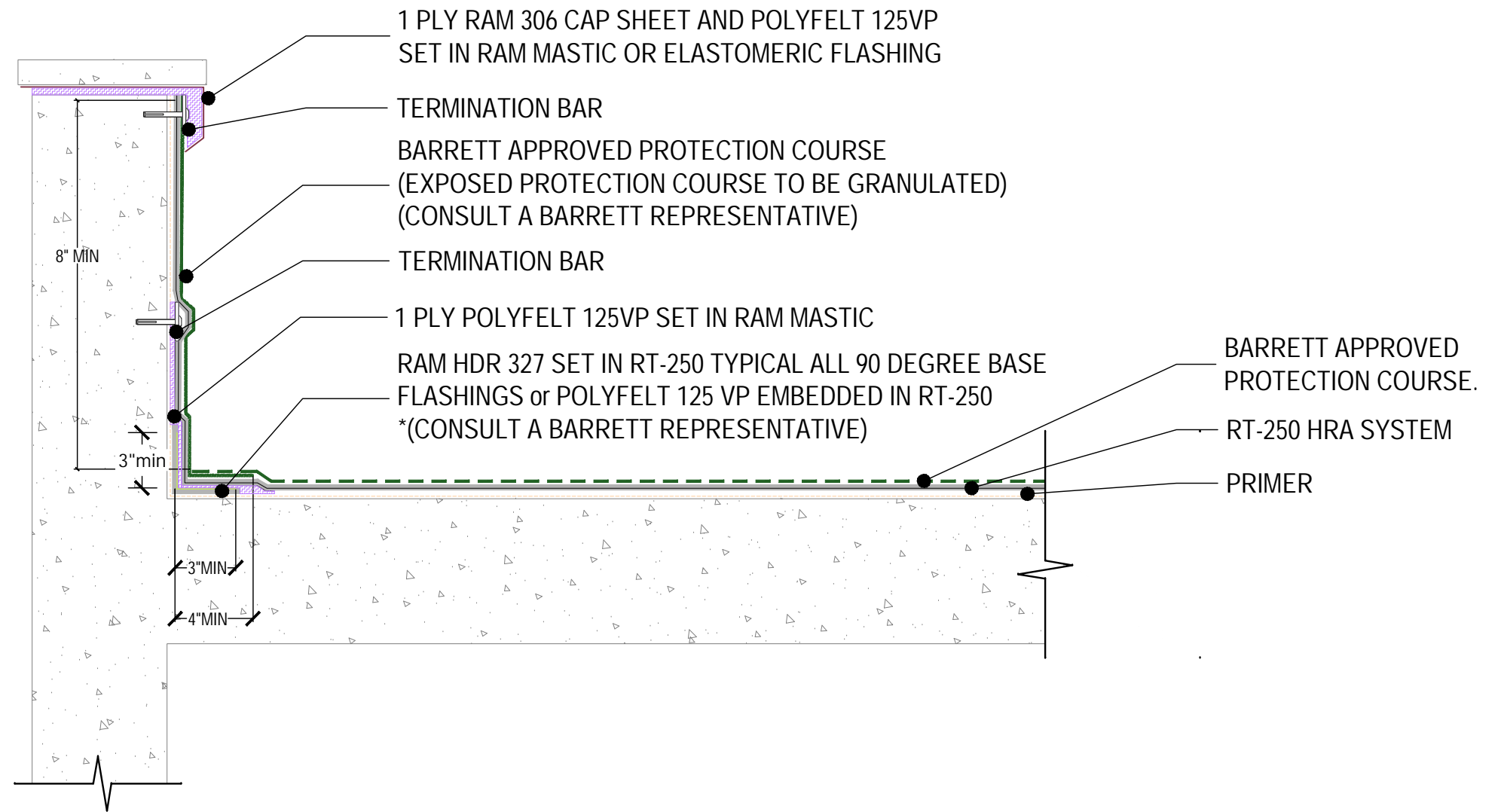


**NOTE:**  
 A METAL COUNTER FLASHING CAN BE SUBSTITUTED FOR THE 2 PLY WALL FLASHING LOCATED ABOVE THE LOWER BASE FLASHING.

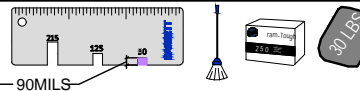


**PREP**  
 CONCRETE DECKS MUST BE MADE REASONABLE SMOOTH, DRY, FREE OF DIRT, LAITANCE, CURING AGENTS, DEBRIS AND OTHER CONTAMINANTS.

**PRIME**  
 PRIME MASONRY/CONCRETE SURFACES AND ALLOW TO DRY BEFORE INSTALLING THE FLASHING SYSTEM.

**RT250 - System Information**

RT-250 HRA- 90 mils (min.)

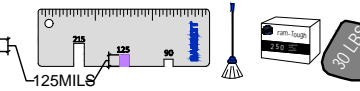


Starting at the low points of the deck, apply a base coat of RamTough 250 no less than 90 mils thick and approximately 44" wide.

PolyFelt 125 VP Reinforcement

While still hot, install one ply of PolyFelt 125 VP reinforcement fabric into the RamTough 250. Standing off to the side, use a broom or squeegee to press the fabric into the hot bitumen

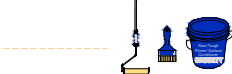
RT- 250 HRA -125 mils (min.)



After the base coat of waterproofing and reinforcement have been completed, apply a top coat of RamTough 250, applied at a minimum thickness of 125 mils.

**RT250 - Additional Product Information and Components**

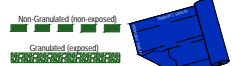
Ram Tough Primer/ Surface Conditioner



Ram Flash 327 HDR



Ram Protection Course (Ram 203,306,306FR)



BUTYL OR POLYURETHANE SEALANT



RamDrain Drainage Mat



www.BarrettRoofs.com  
 : 1-800-647-0100

DRAWN BY:	LDS	SYSTEM:	RT-250
DATE:	7.16.2024	CATAGORY:	PT COPING PARAPET BASE FLASHING
DETAIL NAME:	HIGH WALL FLASHING DETAIL WITH STONE CAP	DETAIL #:	RT250-PT-05