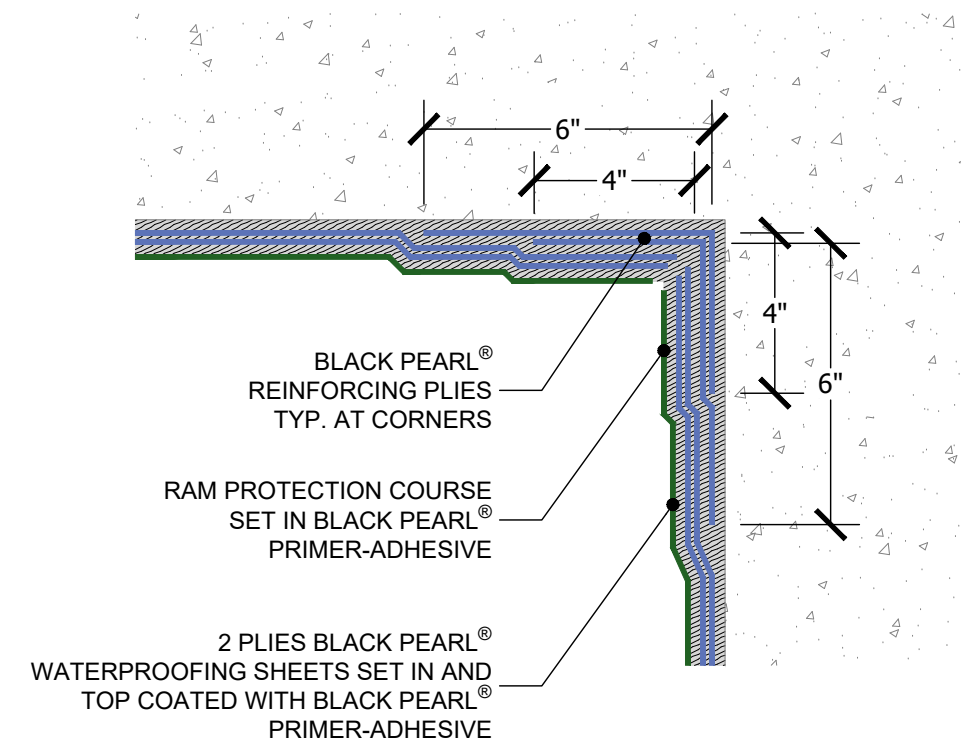


EXTERIOR CORNER



INTERIOR CORNER

PREP
 CONCRETE DECKS MUST BE MADE REASONABLE SMOOTH, DRY, FREE OF DIRT, LAITANCE, CURING AGENTS, DEBRIS AND OTHER CONTAMINANTS.

CLEAN
 ALL PIPE PENETRATIONS (METAL OR PVC) SHOULD BE CLEANED AND FREE FROM ANY SURFACE CONTAMINANTS OR RUST.

BLACK PEARL - System Information

Black Pearl Primer Adhesive
 Apply 15-20 mils of Black Pearl® Primer Adhesive with a non-serrated straight edge squeegee at the rate of 45 sq. ft./gal. Allow it to dry to a tacky condition (approximately 20 minutes) before installing the Black Pearl® Sheet Membrane.

Black Pearl Primer Adhesive
Black Pearl Sheet Membrane
 Rub the sheet into the Black Pearl® Primer Adhesive with a stiff broom, squeegee, hand garden roller, or similar method. Lap all edge seams a minimum of 3 inches. Stagger all end laps a minimum of 6 inches. Coat the top of the first ply with 15-20 mils of Black Pearl® Primer Adhesive at the rate of 45 sq.ft./gal. Allow to dry to tack state.

Black Pearl Primer Adhesive
Black Pearl Sheet Membrane
 Smoothly embed the second ply, offsetting the side laps of the first ply by half a sheet's width. Any "Fishmouths" or wrinkles in the fabric need to be cut out and detailed.

RT250 - Additional Product Information and Components

- Black Pearl Primer Adhesive**
- Black Pearl Butyle Tape**
- Ram Protection Course (Ram 203,306,306FR)**
- BUTYL OR POLYURETHANE SEALANT**
 Ram Mastic, Keene Seal or Liquid Flash 100
- RamDrain Drainage Mat**



www.BarrettRoofs.com
 ☎: 1-800-647-0100

DRAWN BY: LDS	SYSTEM: BLACK PEARL
DATE: 12.02.2024	CATAGORY: CO
DETAIL NAME: CORNER CONDITIONS	CORNER DETAIL #: BP-CO-01