

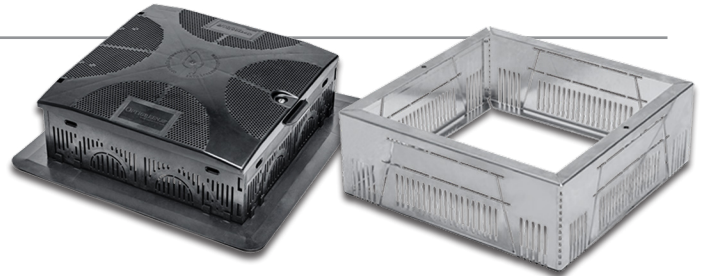
ROOFSCAPES® TerraEDGE™ Box



Green Roof Drainage & Inspection Chambers

Description

Terra-EDGE™ Boxes are prefabricated inspection chambers used to keep loose ballast and green roof components away from the primary roof drains and to allow easy inspection of the drains during normal preventative maintenance.



Benefits

- Protects primary roof drains from loose ballast and debris
- Incorporates drainage slots on all sides that retain growth media while allowing water to flow freely through
- Allows for easy inspection of the drains during routine preventative maintenance and inspections
- Protects the outlets from severe external effects
- Easily removable cover allows access for inspection and for simple maintenance to remove any excess debris
- Connection options for one Triangle Water Conduit Profile on each side of the Standard Inspection Chamber

Uses

- Green roofs
- Vegetative roofs
- Ballasted roofs
- Protected membrane roofs
- Landscaping

Packaging

96 Units per Carton
16 Cartons per Pallet



LEED Credits available for:

- Materials & Resources (MR)

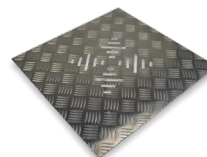
Properties

Standard Inspection Chamber

Description	Measurement
Material	UV-Resistant Recycled ABS
Color	Black
Length	Shaft: 14.5" Base: 18.5"
Width	Shaft: 14.5" Base: 18.5"
Height	4.33" - 32" (Adjustable in 4" segments)
Weight	5.3 lbs/unit
Shaft Floor Opening	11.75"
Water Discharge Capacity (Each System)	@ 0% Slope = 17.91 gal/min @ 1% Slope = 19.33 gal/min @ 2% Slope = 19.65 gal/min @ 3% Slope = 19.81 gal/min <i>*Dependent on media type</i>
Compressive Strength	330 lbs
Installation Requirements (per 2,000 sq/ft area)	• (1) ISC-FUA Standard Inspection Chamber • (30) TWC-WLP Triangle Water Conduit Profiles

Aluminum Inspection Chamber

Description	Measurement
Material	Aluminum
Color	Mill (Aluminum Finish)
Length	17.3"
Width	17.3"
Height	5.5" • Support Leg: 1.18" • Extensions: 2" / 4"
Weight	6.5 lbs/unit



Chamber Cover



Extension - 2"



Extension - 4"